

## School and Institutional Emergency Mobilization and Notification System

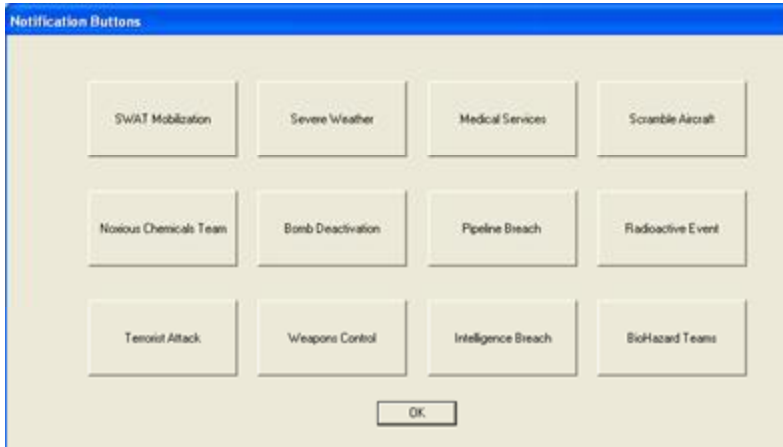
Welcome to the new age of Push Button Notification



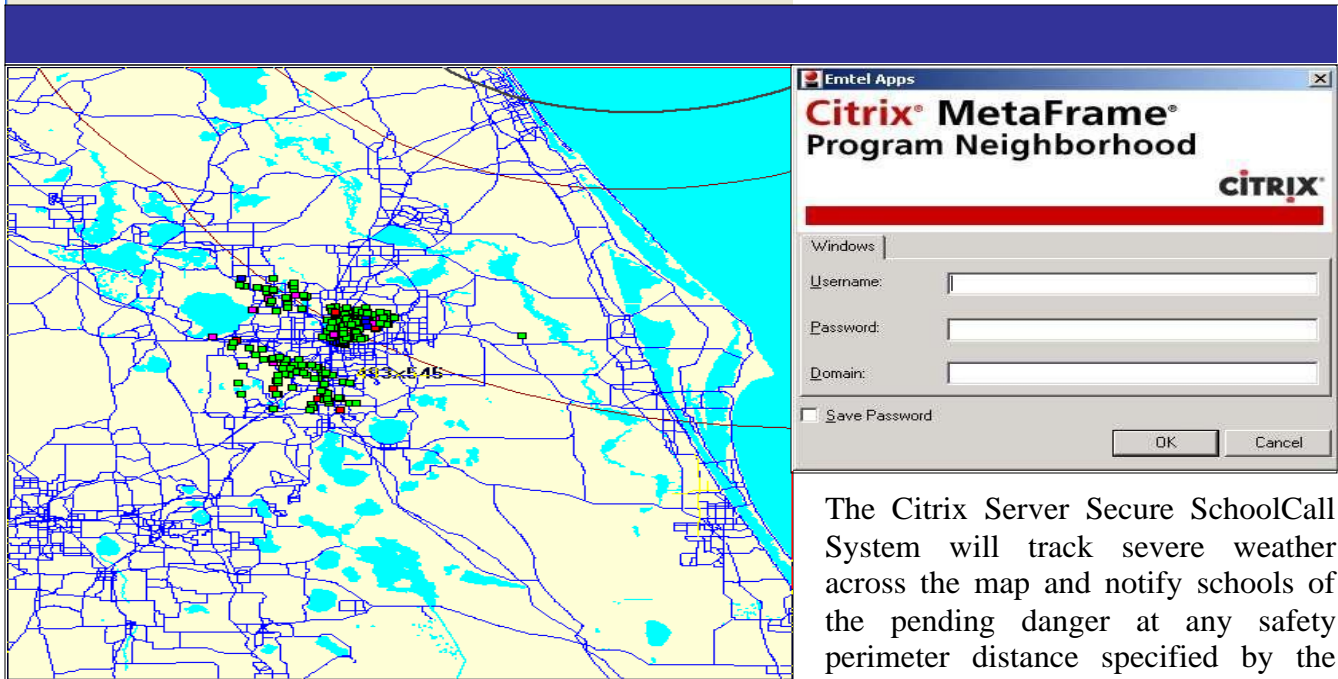
SchoolCall911<sup>®</sup> is an automated communication system that will detect and notify school officials of hazards 24-7; from severe weather, noxious chemicals, bio-hazards, radiation, or any other threats to the school system. SchoolCall911<sup>®</sup> with a press of a button, can notify responders, call parents, notify teaching staff, communicate with busses, broadcast school closings, coordinate evacuations and simply schedule PTA meetings. Utilizing the geo-coded mapping system, schools can be automatically selected from the map and advised of pending danger from advancing hazard plumes, Terrorism or storm fronts.

# SchoolCall 911®

## Push Button Touch Screen Scenario Activation



With the push of a button an administrator can easily activate the notification of all responders, school officials, and parents for any specific scenario. SchoolCall911® connects to other EMTEL products including severe weather, bio-hazard, radiation, and contaminated potable water notification systems. This touch screen technology is wireless, mobile, portable, friendly and affordable.



The Citrix Server Secure SchoolCall System will track severe weather across the map and notify schools of the pending danger at any safety perimeter distance specified by the safety administrator. The map (Left) illustrates Hurricane Charlie crossing Orlando Florida with a fifty mile per hour ring activating school notifications with a ten mile advanced notice perimeter. Phone notifications provide real time feedback to validate reception of the communication. Messages can be recorded real time or pre-recorded and archived.

### Alert Delivery Interface Mechanisms

- Campus Sirens
- Internal Intercom
- Cell SMS Broadcast
- Hearing Impaired TDD
- Wireless E-Mail
- Automated Campus Signs
- Hearing Impaired VibAlert
- External Speakers
- Land Line Phones
- Targeted FM Broadcast
- Pager Notification
- FAX Broadcast
- Internet Collaboration
- Cell Phone Direct Dial

**Emergency Management Telecommunications, Inc.**  
 445 Pineda Court, Melbourne, Florida 32935  
 Phone: 321-259-1137 FAX: 321-259-1121

